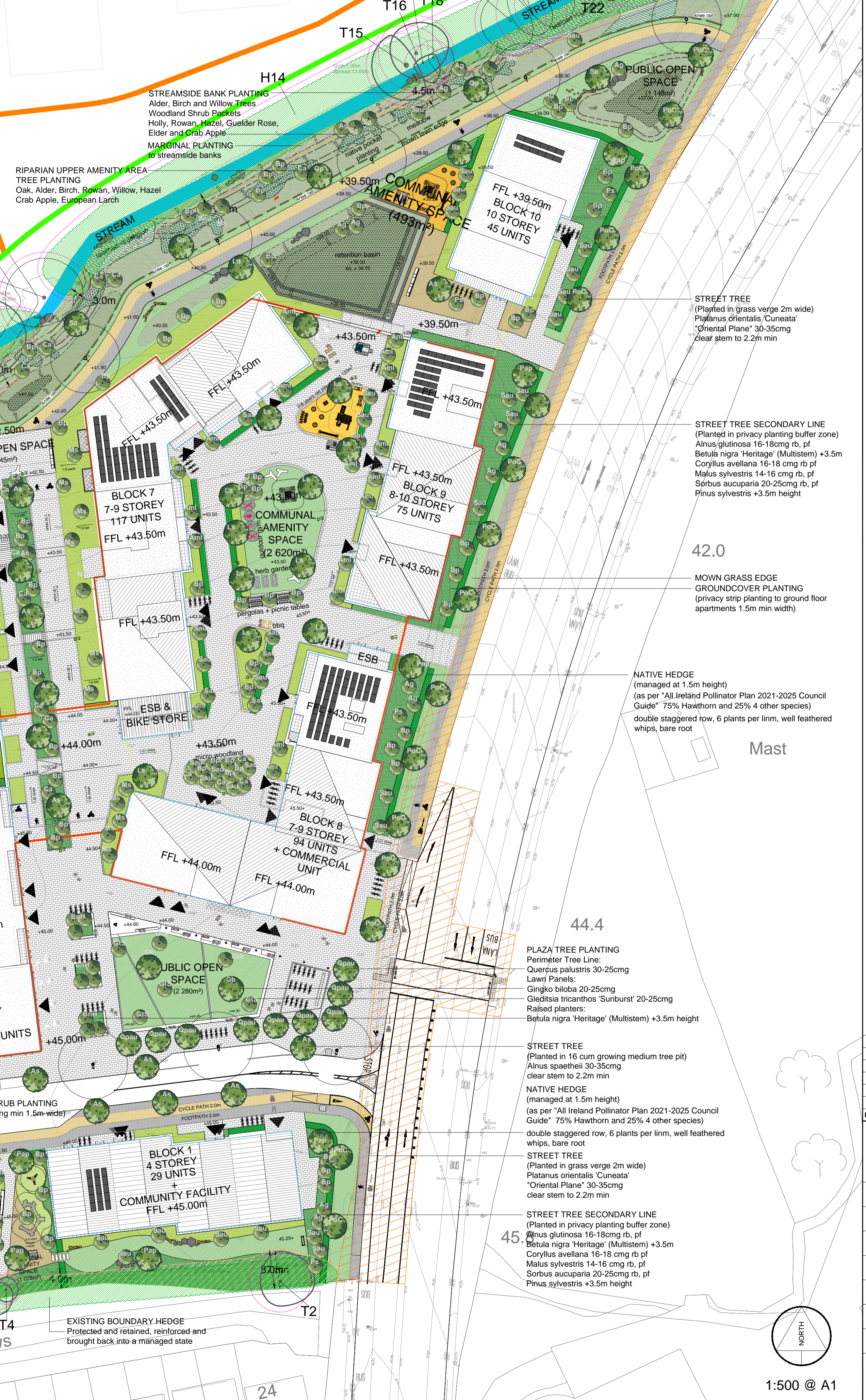


PLANTING SPECIES LIST		
BOTANIC NAME	COMMON NAME	SIZE
cmg = container girth, rb = rootball, cg = container grown, pf = pollinator friendly with reference to 'Forest of Final, A Tree Strategy for Fingal'		
STREET TREES		
As	Alnus spaethii	*Spaeth's Alder 30-35cm rb, pf 15No.
Tc	Tilia cordata 'Streetwise'	*Small Leaved Lime 30-35 cmg rb, pf 13No.
Pc	Platanus orientalis 'Cuneata'	*Oriental Plane 30-35cm rb 16No.
SPECIMEN TREES PLAZA		
BnH	Betula nigra 'Heritage' (Multistem)	*River Birch +3.5m height rb 9No.
Gb	Ginkgo biloba	*Maidenhair 20-25cm rb 2No.
GlS	Gleditsia tricanthos 'Sunburst'	*Honey Locust 20-25cm rb 7No.
Qpau	Quercus palustris	*Pin Oak 30-25cm rb, pf 9No.
RIPARIAN PARKLAND TREES		
Ag	Alnus glutinosa	*Alder 16-18cm rb 18No.
Bp	Betula pendula	*Betula 16-18cm rb 25No.
Ca	Corylus avellana	*Hazel 16-18 cmg rb pf 5No.
Ld	Larix decidua	*Larch 20-25 cmg rb 2No.
Ms	Malus sylvestris	*Crab Apple 16-18 cmg rb 2No.
Opst	Quercus petraea	*Sessile Oak 20-25 cmg rb 5No.
Sa	Salix	*Willow 16-18 cmg rb 9No.
Sau	Sorbus aucuparia	*Rowan 16-18 cmg rb, pf 5No.
CENTRAL ROUTE TREES		
Ag	Alnus spaethii	*Alder 20-25cm rb 16No.
Bp	Betula pendula	*Birch 16-18cm rb 9No.
Ca	Corylus avellana	*Hazel 16-18 cmg rb pf 7No.
Ms	Malus sylvestris	*Crab Apple 16-18 cmg rb 13No.
BOUNDARY TREES		
Ac	Acer campestre	*Field Maple 16-18 cmg rb 1No.
As	Alnus glutinosa	*Alder 16-18 cmg rb 6No.
Bp	Betula pendula	*Birch 16-18cm rb 12No.
Sa	Sorbus aucuparia	*Rowan 20-25 cmg rb, pf 26No.
Pap	Prunus avium 'Plena'	*Bird Cherry 20-25 cmg rb 5No.
Pn	Pinus nigra	*Black Pine +3m height 5No.
Ps	Pinus sylvestris	*Scots Pine 1No.
Sa	Sorbus aucuparia	*Rowan 16-18 cmg rb pf 59No.
COMMUNAL COURTYARD TREES		
Am	Amelanchier 'Robin Hill'	*Snowy Mesplis 16-18cm rb, pf multistem 52No.
As	Alnus spaethii	*Alder 16-18cm rb 4No.
Bpm	Betula pendula	*Multistem Birch +2.5m height rb 38No.
Ca	Corylus avellana	*Hazel 16-18 cmg rb pf 22No.
Ls	Liquidambar styraciflua	*Sweetgum 20-25cm rb 11No.
Pap	Prunus avium 'Plena'	*Wild Gean 20-25cm rb, pf 6No.
Ps	Pinus sylvestris	*Scots Pine +3m height 1No.
Sa	Sorbus aucuparia	*Rowan 16-18 cmg rb pf 59No.
New Trees 448No.		

DECORATIVE SHRUB AND GROUND COVER PLANTING 75% Pollinator Friendly			
Botanical Name	Common Name	Size	%Mix
Anemone 'Honorable Jobert'	*Japanese Anemone	1.5Ltr pf topsize	4 per sqm
Camassia leitchii	Camassia	2Ltr pf	3 per sqm
Hydrangea 'Annabelle'	*Hydrangea	2Ltr pf	3 per sqm
Liberia grandiflora	*Liberia	3Ltr	3 per sqm
Liriodendron muscari	*Liriodendron	2Ltr pf	6 per sqm
Luzula nivea	*Snowy Woodrush	3Ltr	5 per sqm
Rosmarinus officinalis	*Rosemary	3Ltr pf	3 per sqm
Sarcococca humilis	*Christmas Box	3Ltr pf	4 per sqm
Sedum spectabile 'Stardust'	*Ice Plant	2Ltr cg, pf	6 per sqm
Verberna bonariensis	Verberna	2Ltr pf	4 per sqm
Dryopteris felix mas	*Male Fern	2Ltr	4 per sqm
Hedera helix 'Hibernica'	*Ivy	1.5Ltr cg, pf	6 per sqm
Lonicera periclymenum	*Honeysuckle	1.5Ltr cg, pf	1 per sqm
Viburnum opulus	*Guelder Rose	60-90mm, pf	1 per sqm
Viburnum tinus	*Laurustinus	2Ltr pf	4 per sqm
Skimmia japonica	*Skimmia	3Ltr pf	4 per sqm
Hebe raietensis	*Hebe	3Ltr pf	4 per sqm
WOODLAND UNDERSTOREY PLANTING 25% Pollinator Friendly			
Botanical Name	Common Name	Size	%Mix
Anthriscus sylvestris	Cow Parsley	P9, pf	2.5
Digitalis purpurea	Foxglove	P9, pf	2.5
Dryopteris felix mas	Male Fern	9cm pot	20
Hedera helix Hibernica	Ivy	9cm pot	20
Lonicera periclymenum	Honeysuckle	9cm pot	5
Luzula sylvatica	Woodrush	9cm pot	25
Molinia caerulea	Purple Moor Grass	9cm pot	20
Primula vulgaris	Primrose	9cm pot	2.5
Viburnum opulus	Guelder Rose	3Ltr	2.5
Bulbs			
Hyacinthoides non-scripta	Bluebell	topsize	

HEDGES			
NATIVE HEDGE (as per 'All Ireland Pollinator Plan 2021-2025 Council Guide' 75% Hawthorn and 25% 4 other species)			
Species	Size	Planting	Notes
75% Hawthorn	6 plants per linn	well feathered whips, bare root	
25% 4 other species			
Corylus avellana	"Hazel"	900-1200mm	15%
Prunus spinosa	"Blackthorn"	900-1200mm	75%
Sambucus nigra	"Elder"	900-1200mm	2.5%
Lonicera periclymenum	"Honeysuckle"	3Ltr	2.5%
ORNAMENTAL HEDGE			
Ilex aquifolium 'Alaska'	"Holly"	600-900mm high	
Ilex crenata 'Green Lustre'	"Box Leaf Holly"	600mm high	
SPRING BULBS			
Anemone nemorosa	"Wood Anemone"	topsize, pf	25 per sqm
Hyacinthoides non-scripta	"Bluebell"	topsize, pf	25 per sqm
Iris pseudacorus	"Yellow Flag"	topsize, pf	25 per sqm
MEADOW MIX TO BANK			
MARGINAL PLANTING			
Filipendula ulmaria	"Meadowsweet"	P9	
Caltha palustris	"Marsh Marigold"	P9	
Carex pendula	"Sedge"	P9	
Lytium salicaria	"Purple Loosestrife"	P9	
Molinia caerulea	"Purple Moor Grass"	P9	
Ranunculus flammula	"Lesser Spearwort"	P9	
Iris pseudacorus	"Flag Iris"	P9	



KEY

- Reinforced Grass Play Safety Surface 200mm sand/soil depth on subbase
- Decorative Shrub Planting 75% pollinator friendly mix 450mm topsoil depth
- Woodland Shrub Block Planting and Woodland Understorey 450mm topsoil depth
- Grass seeding 300mm topsoil depth
- Green Roof Pollinator friendly sedum matting 150mm topsoil depth
- Meadow + Pollinator friendly mowing regime 150mm topsoil depth
- Existing Hedgerow/Tree Retained and Protected refer to Arborist Documentation
- New Tree 5m dia 20-25cmg (specimen 30-35cmg)
- Small New Tree 3m dia 16-18cmg or multistem +3.5m height
- Hedge Planting 600mm topsoil depth
- Natural Play / Habitat Features Balance Logs Stepping stones Boulders

REV	DESCRIPTION	ISSUED BY	DATE

MITCHELL + ASSOCIATES
LANDSCAPE ARCHITECTURE URBAN DESIGN

Unit 1, Woodpark, The Rise, Glasnevin, Dublin 8, Ireland | t +353 1 454 5566 | info@mitcheassociates.com

PROJECT: Fosterstown North SHD
CLIENT: J. Murphy (Developments) Limited
JOB NO.: LFOS004
DRAWING: Planning Plan
DRAWING NO.: 101
DRAWN BY: Celia Harris
CHECKED: CH
DATE: 14 03 2022
STATUS: Planning Submission
SCALE: 1:500 @ A1
REVISION: 00

NOTES:
All dimensions are in millimeters unless otherwise stated and shall be checked and confirmed by the contractor on site. Any discrepancies shall be immediately reported to the landscape architects. Work to figured dimensions only - Do not scale from drawing. Do Not Scale. Use Figure Dimensions Only. Not for Construction Purpose unless Specifically Marked.
© THIS DRAWING IS COPYRIGHT OF MITCHELL + ASSOCIATES

1:500 @ A1